

## JANGADA

A sofa formed of simple elements in limitless solutions, both in width and depth. Particularly suitable for large spaces, it allows you to sit on both sides thanks to the many positions where different types of backs can be easily inserted. There is also a useful metal side table with matching finishes integrated into the composition. Jangada can be adapted to both young and informal rooms or more classical rooms, depending on the fabrics and finishes selected.

It has a wooden structure with resined fire-resistant foam padding. The elements are easily attachable via a metallic device.

The cover can be fixed or removable; there is an underlining to avoid deformations due to wear over time.

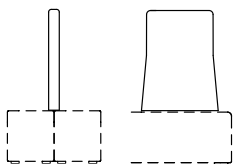
Also made to measure.



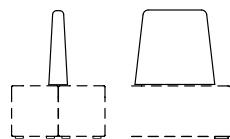
BENCH  
W cm 240 \_ H cm 38 \_ D cm 25



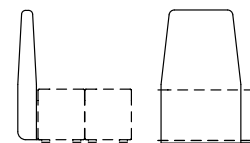
BENCH  
W cm 240 \_ H cm 38 \_ D cm 35



BACKREST XL  
W cm 50 \_ H cm 75 \_ D cm 8



BACKREST L  
W cm 55 \_ H cm 55 \_ D cm 13



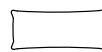
BACKREST M  
W cm 55 \_ H cm 93 \_ D cm 9



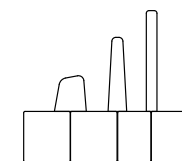
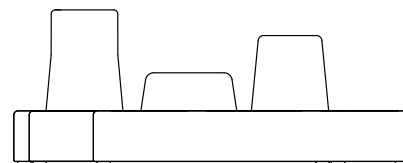
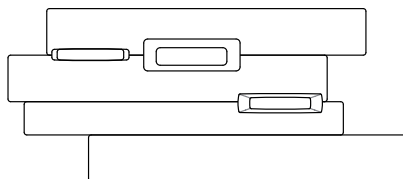
BACKREST S  
W cm 60 \_ H cm 24/28 \_ D cm 30



PILLOW  
Ø 20 x 70



PILLOW  
cm 30 x 60



## JANGADA

The integrated table, with a steel top and structure, is available in the following finishes:

Matt lacquered in epoxy  
- standard colours RAL 9003 RAL 9005 RAL 7001  
- with a surcharge for any RAL colour on the colour chart

